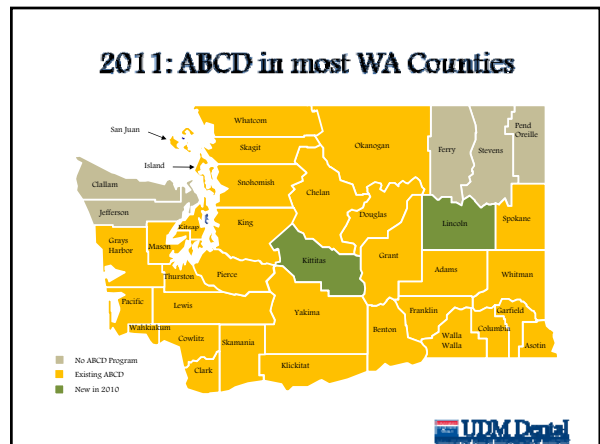
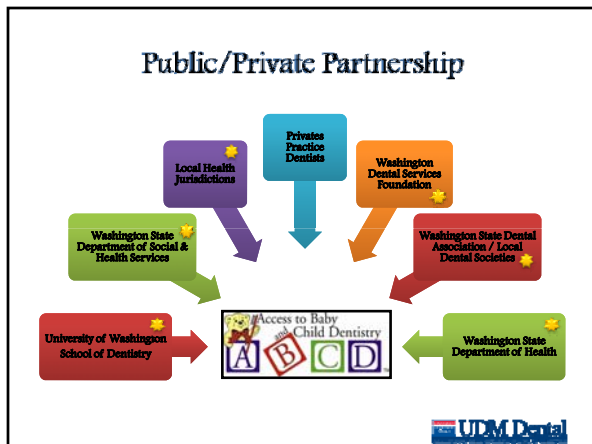
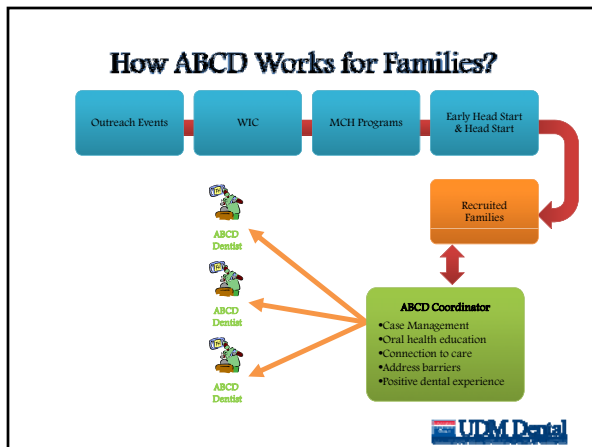
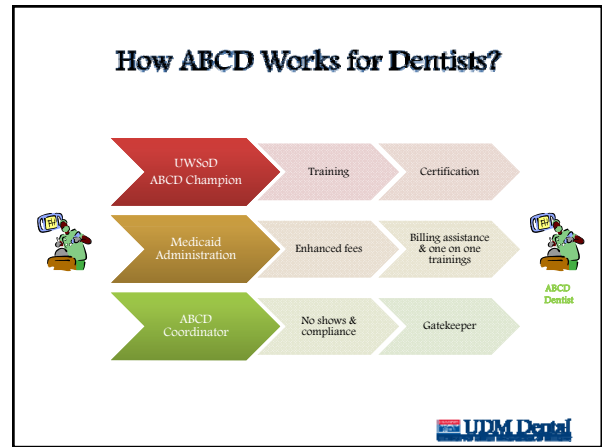
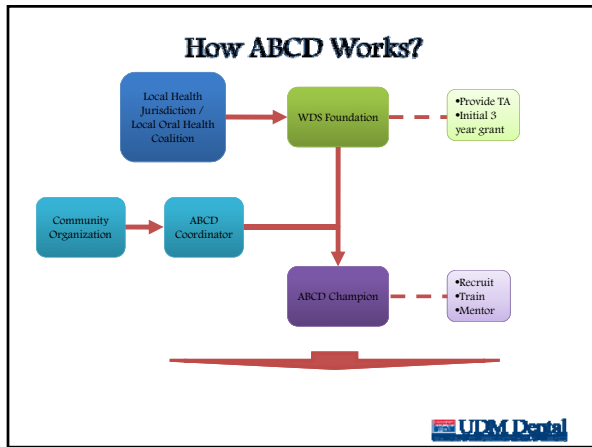
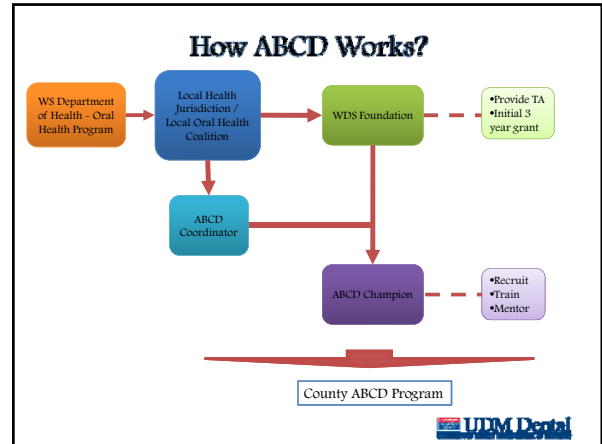
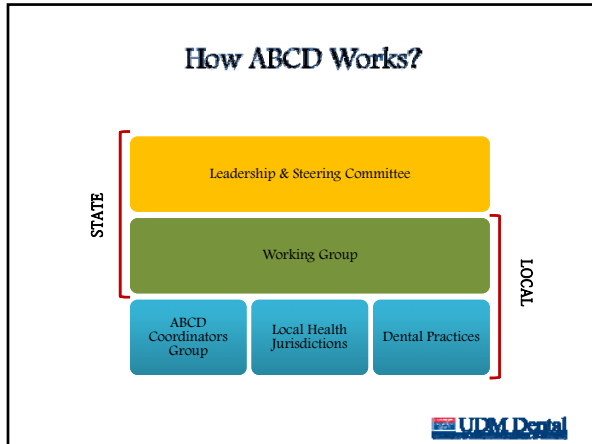


Washington State Access to Baby & Child Dentistry Program

- ### ABCD - History
- Established in Spokane County, WA in 1995
 - Spokane County Dental Society
 - Spokane Health District
 - DSHS – Medicaid
-

- ### ABCD - Goals
- Goals:
 - Early intervention – by age one
 - Positive dental experience
 - More dentists will see low-income children and families
 - Young children will have fewer cavities
 - Families and the community will be more knowledgeable about oral health

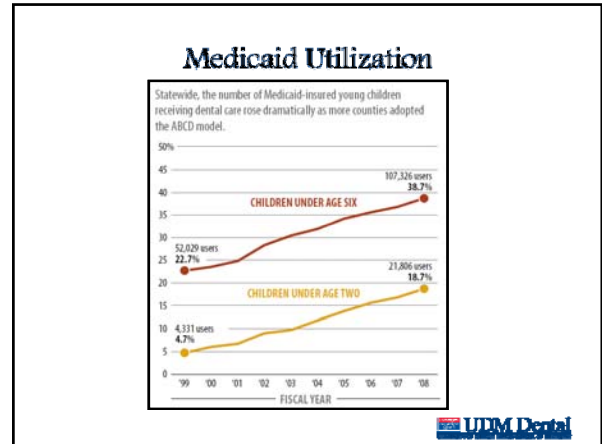
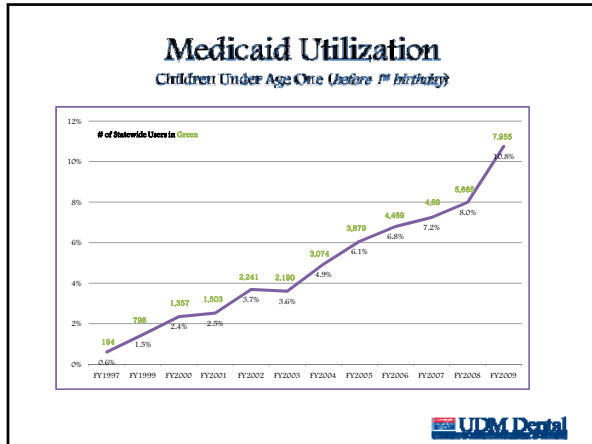




Dentists Trained & Certified in ABCD

- Approximately 1300 Washington Dentists trained since 1997
- Represents 1 in 3 Washington Dentists
- Now included in UW Dental School Curriculum

UDM Dental



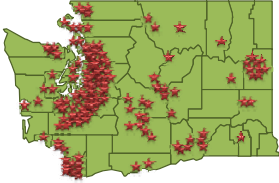
FY 2008 ~ 2009 Cost and Utilization Summary for Ages Less Than 6 As of 11/30/09

Age Category	Year	Number of Eligible	Total Payment	Number of Distinct Users	Number of Distinct Claims	Number of Providers	Average Claims Per Provider
Ages Less than 1	2008	71,965	\$435,946	5,823	7,466	419	14
	2009	73,997	\$609,825	7,955	10,344	432	18
1 <= Ages < 2	2008	46,701	\$2,129,424	16,371	26,899	626	26
	2009	50,327	\$2,812,542	20,750	34,808	653	32
2 <= Ages < 3	2008	42,636	\$4,586,460	18,772	37,198	715	26
	2009	46,862	\$6,352,748	22,684	45,013	738	31
3 <= Ages < 4	2008	40,710	\$8,322,033	21,250	51,141	851	25
	2009	44,105	\$10,083,493	24,806	59,292	854	29
4 <= Ages < 5	2008	38,912	\$9,732,818	22,950	62,632	910	25
	2009	42,373	\$11,546,758	26,363	72,307	891	30
5 <= Ages < 6	2008	37,280	\$8,794,278	22,690	62,371	933	24
	2009	40,550	\$10,097,327	25,182	69,348	940	27
TOTAL All Dental Services for Ages Less than 6	2008	278,304	\$34,400,958	107,825	247,907	1,185	91
	2009	298,394	\$41,512,694	127,734	291,612	1,175	109


2001	Best Practice, American Academy of Pediatric Dentistry
2003	Heroes of Health Care Award, Washington Health Foundation
2004	Best State Practices, Association of State and Territorial Dental Directors
2005	Named one of three innovative health models nationally, WK Kellogg Foundation
	"A" grade, Oral Health America report
2006	Recognized as effective program addressing children's health disparities, Children's Defense Fund Report.

Increased engagement of primary care medical providers


Primary Care Medical Provider Engagement



- 2010:
 - 65 in-office trainings conducted
 - reaching: >254 providers plus 330 staff
- 1360 Primary Care Providers trained plus 1570 staff
- 1 in 3 practicing primary care MDs in WA now trained




Service	Year Started	Reimbursement Rate
Fluoride Varnish Application	1998	\$13.25
Family Oral Health Education	2008	\$27.58
Oral Screening	2008	\$29.46



Statewide Campaign


- Paid Media: Parenting magazines (Seattle, Yakima, Centralia, Vancouver), Online newspapers statewide, Spanish language print and radio
- Earned Media: Seattle's Child, Walla Walla Union Bulletin, Spokesman-Review, The Olympian
- New Media: Ads on Facebook
- Promote KidsOralHealth.org website
- WA State Dept of Health—Child Profile mailing to families with 9 month olds
- Pilot First Visit By First Birthday Campaigns in Grant And Asotin Counties



IMPACT

- The proportion of children under age six on Medicaid who were accessing dental care rose from 23 percent in 1999 to 39 percent in 2008
- Increase was seen for children under age two, with 19 percent getting a dental visit in 2008, up from 5 percent in 1999.


Access to Baby and Child Dentistry Program, "Overview of the Access to Baby and Child Dentistry (ABCD) Program"



IMPACT

- Surveys of families with Medicaid-enrolled children and dentists show positive attitude changes connected to ABCD participation.
- ABCD-trained dentists are three times more likely than other dentists to say they are comfortable seeing children under a year old


David Grembowski and Peter Milgrom, "Increasing Access to Dental Care for Medicaid Preschool Children: The Access to Baby and Child Dentistry (ABCD) Program," Public Health Reports 115 (September/October 2000): 448-459. Access to Baby and Child Dentistry Program, "ABCD Evaluation Presentation."



ABCD Provider Experience

2008 ABCD Provider Survey:

- Practices make ABCD work with...
 - Efficient scheduling
 - Utilizing auxiliary staff including expanded duties assistants
- ABCD is successful...
 - Reimbursement covers education for families
 - Builds relationships with and referrals from general to pediatric dental practices
 - Dental offices control # of children they accept
 - Most families are reliable – low no-show rates
 - Prepares providers to provide early intervention with all families



ABCD Provider Experience

2008 ABCD Provider Survey:

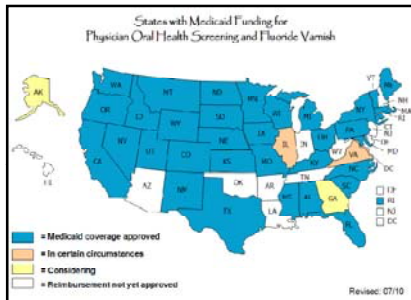
- What ABCD Dentists say:
 - "Medicaid patients will someday be off Medicaid so they can aid in building your practice."
 - "Seeing toddlers has helped my practice recruit entire families."
 - "This is...great contact with pediatric dentists...for general dentists."
 - "My staff is proud of our participation -- they thank me and say they feel good about what we do for these families."



ABCD: THE FUTURE

GOALS

- Increase number of younger children seen (0-2 years old)
- Involve more pediatric dentists, continue to recruit general dentists
- Increase impact through outreach and case management



McAuley Health Center

Infant Oral Health Program



McAuley Health Center

- Primary Care for acute and chronic conditions
- Physical Examinations
- Health Promotion and Disease Prevention
- Immunizations
- Health Screenings
- Health Education / Counseling
- Outreach to Schools



Infant Oral Health Program

- Collaboration between UDM School of Dentistry & College of Health Professions
- Pilot program funded by MDCH
- Starting in Fall 2011



AAP and AAPD Recommendations

- Oral risk assessment
 - including a visual oral screening
- Anticipatory Guidance
- Preventive strategies
- Establishment of the dental home by age one



Infant Oral Health Program

- Training for Nurse Providers, nursing faculty and students
- MDCH Staff & UDM Dental Dept. of Pediatric Dentistry conduct training



Infant Oral Health Program

- Risk Assessment / Oral Screening
- Provide anticipatory Guidance
- Apply fluoride varnish

- Refer to UDM School of Dentistry Pediatric Clinic



EMAIL: divesh.byrapagari@gmail.com

